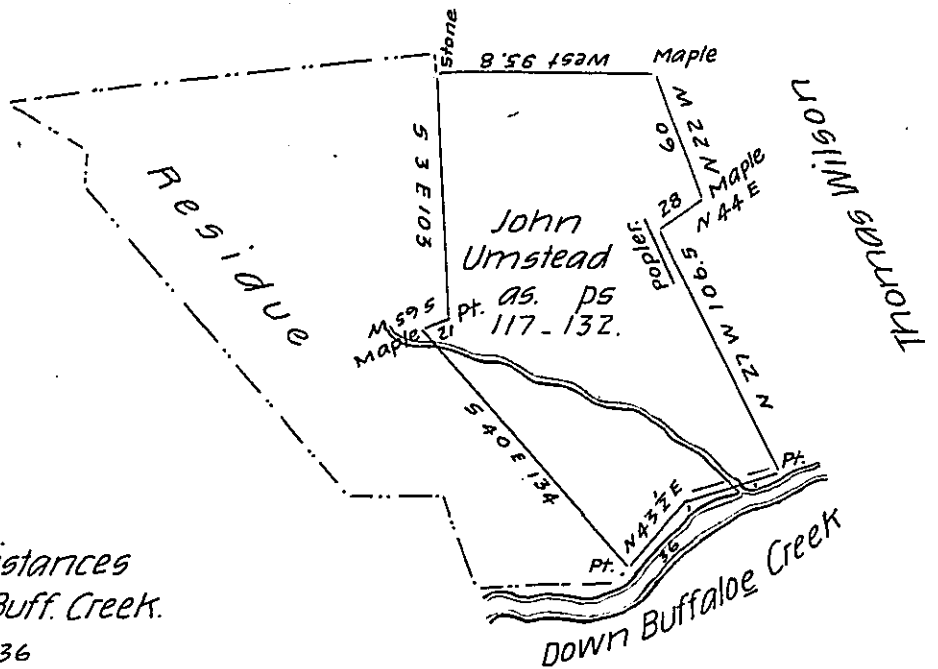


John Heirly
in right of Ernor Moore.



Cor & Distances
Down Buff. Creek.

N 43 1/2 E	36
N 70 E	31
N 77 E	14
<hr/>	
	81

A Draft of one Hundred and seventeen acres and one hundred thirty-two perches part of a larger tract of two Hundred & seventy-two acres & nine tenths surveyed and divided off the 1st day of December A.D. 1833 in pursuance of an order Granted to John Umstead Dated the 3d day of April 1769 No 1255 Situate in Buffaloe township Union County

Robert G. H. Hayes D.S.

To Jacob Spangler Esqr.
Surveyor General-Penn-

IN TESTIMONY that the above is a copy of the original remaining on file in the Department of Internal Affairs of Pennsylvania, made conformably to an Act of Assembly approved the 16th day of February, 1833, I have hereunto set my Hand and caused the Seal of said Department to be affixed at Harrisburg, this twenty-eighth day of April 1905

Joseph D. ...
Secretary of Internal Affairs.